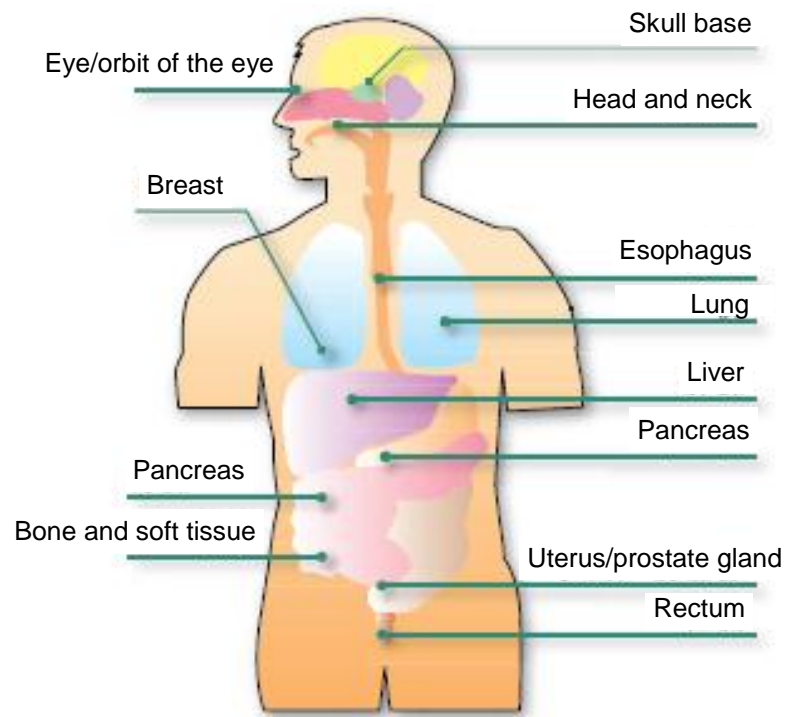


Types of cancer for which heavy ion radiotherapy is considered effective at present and guidelines to the number of treatments and treatment period

## Types of cancer for which heavy ion radiotherapy is considered effective at present



## Guidelines to the number of treatments and treatment period

※This also depends on the treatment institutions and the status of acceptance.

Indication	Number of treatment	Treatment period
Skull base neoplasm	16 sessions	4 weeks
Eye tumor (melanoma, lacrimal gland)	5-12 sessions	1-3 weeks
Head and neck cancer	16 sessions	4 weeks
Esophageal cancer	8-12 sessions	2-3 weeks
Lung cancer (Stage I non-small-cell lung cancer)	1-4 sessions	1 day to 1 week
Hepatocellular carcinoma	2-4 sessions	2 days to 1 week
Pancreatic cancer	8-12 sessions	2-3 weeks
Kidney cancer	12 sessions	3 weeks
Uterine cancer	20 sessions	5 weeks
Prostate cancer	12-16 sessions	3-4 weeks
Rectal cancer (postoperative recurrence)	16 sessions	4 weeks
Bone and soft tissue tumor	16 sessions	4 weeks

(From the treatment results of the National Institute of Radiological Sciences and Gunma University)